

Tyco / Electronics
 Raychem Circuit Protection
 308 Constitution Drive
 Menlo Park, CA 94025-1164
 Phone: 800-227-4856
 Fax: 800-227-4866

PolySwitch®
PTC Devices
 Overcurrent Protection Device

PRODUCT: nanoSMDM050

DOCUMENT: SCD 24570
 PCN: 481498
 REV LETTER: E
 REV DATE: AUGUST 10, 2001
 PAGE NO.: 1 OF 1

Specification Status: Released

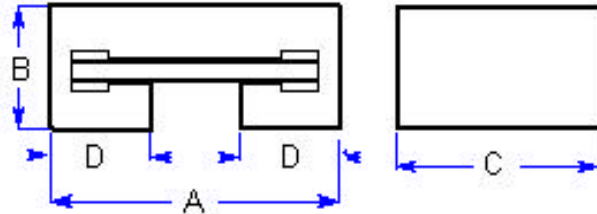
Maximum Electrical Rating

Voltage: 6.0V_{DC} MAX

Current: 40A

Notes:

1. All terminations are Gold plated.
 Partial coverage of plating with solder may occur without effect on solderability or electrical performance
2. Devices cannot be wave soldered.
3. Drawing not to scale



Marking:

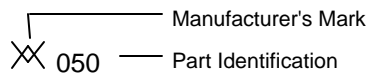


TABLE I. DIMENSIONS:

	A		B		C		D	
	MIN	MAX	MIN	MAX	MIN	MAX	MIN	MAX
mm:	3.0	3.4	0.8	1.2	1.4	1.8	0.75	1.05
in.*	(0.118)	(0.134)	(0.032)	(0.047)	(0.055)	(0.071)	(0.030)	(0.041)

*Rounded off approximation

TABLE II. PERFORMANCE RATINGS:

CURRENT RATINGS**						TIME TO TRIP **	RESISTANCE VALUES		TRIPPED-STATE POWER DISSIPATION**
AMPERES AT 0°C		AMPERES AT 25°C		AMPERES AT 60°C		SECONDS AT 25°C, 8.0A MAX	OHMS AT 25°C		WATTS AT 25°C, 6.0V MAX
HOLD	TRIP	HOLD	TRIP	HOLD	TRIP		MIN	MAX*	
0.59	1.18	0.50	1.00	0.35	0.70	0.10	0.15	0.70	0.6

*Maximum resistance is measured 1 hour after reflow.

** Values specified were determined using PCB's with 0.030"X1.5 ounce copper traces.

Reference Documents: PS300
 Precedence: This specification takes precedence over documents referenced herein.
 Effectivity: Reference documents shall be the issue in effect on the date of invitation for bid.
 CAUTION: Operation beyond the rated voltage or current may result in rupture, electrical arcing or flame.